



J.HARVEST & FROST
CORPORATE SHIRTMAKER

2023



J. HARVEST & FROST

C O R P O R A T E S H I R T M A K E R



J.HARVEST & FROST

Our mission is to bring passion and aesthetics to your workday. J.Harvest & Frost is built on the belief that aesthetics, quality design and precision craftsmanship play fundamental parts in our lives. In other words – we believe in order to thrive and find our passion while we work - we need to surround ourselves with things which inspire and encourage us.

WE ARE SHIRTMAKERS

We are a work shirt brand for men and women - and in order to succeed in our mission, and become “fuel for your passion”, we offer well-made, detailed and affordable work shirts of the highest quality. We aim to be that undefinable, yet powerful, intangible asset which aesthetics represents in your workday. J. Harvest & Frost was established in 2014 as a result of a collaboration between two brands – James Harvest Sportswear, rooted in U.S. college fashion with worldwide distribution and Frost, with its focus on tailored, well-cut garments in a small scale. Two excellent concepts brought together in one brand.

We started on a journey to develop our lines of high quality work shirts for men and women.

To be there with you – everyday - at the workshop, the office or at the pub – we set out to develop a collection of shirts which would meet the needs of those occasions. Quality, durability, and ruggedness became our lodestars.

We found inspiration in early 20th century fashion, as well as books, movies, brands and classic designers. We were determined to create something unique – but still at affordable prices. We wanted to make each garment something we would’ve loved to wear ourselves.

NEVER DONE

Still, people’s expectations and needs changes, so we realize, with delight, that our pursuit for that perfect work shirt will be never-ending and we’ll continue our journey and search for the best fit, materials, details, stitches and techniques.

Making these products demands a holistic view on design, and we recognize that aesthetics are more than visual beauty. We live by the rule that quality design is the sum of three inseparable variables; excellent craftsmanship, the best materials and integrity.

So, while we’re on our quest to give you that little bit of extra beauty in you workday – rest assured – we have got your back. Work hard – and put all your energy into your own dreams. We’ll make sure you’re always dressed for the occasion.



BUSINESS CLASSICS

BLACK BOW 60	6
GREEN BOW 01	10
YELLOW BOW 50	12



BUSINESS CLASSICS WITH A TWIST

RED BOW 20	16
RED BOW 24	17
RED BOW 29	18
RED BOW 120	20
RED BOW 122	22
YELLOW BOW 51	23



PATTERNED SHIRTS

PURPLE BOW 48	37
PURPLE BOW 49	39
PURPLE BOW 141	40
PURPLE BOW 143	41
INDIGO BOW 37	43
YELLOW BOW 50 STRIPE	45
YELLOW BOW 53	47



CASUAL SHIRTS

INDIGO BOW 33	51
INDIGO BOW 34	53
INDIGO BOW 130	54
INDIGO BOW 131	55
YELLOW BOW 54	57
INDIGO BOW 30	58



SUITS & BLAZERS

CLASSIC BLAZER 20	68
CLASSIC TROUSER	69
CLUB BLAZER 30	70
CASUAL BLAZER	71



COATS

TECHNICAL CITY COAT	74
TECHNICAL PARKA	75

SMART CASUAL

RED BOW 121	27
PURPLE BOW 142	29
PURPLE BOW 144	30
YELLOW BOW 52	31
PURPLE BOW 146	33

SWEATERS

MERINO V	62
MERINO U	64

ACCESSORIES

CUFFLINKS	78
SOCKS	78
TIES	78
HANDKERCHIEFS	79

THE J.HARVEST & FROST CONCEPT DIVISIONS



Black Bow – our top of the line collection business shirt. Full featured, classic shirts with state of the art anti-spill nano treatment, prepressed sleeve, never iron treatment, taped seams, split yoke. 100 % premium long staple compact cotton.



Green Bow – our classic business shirt collection. Here you find our single color products. Timeless classics that will never go out of style. Non Iron, Taped Seams, Split Yoke. 100 % premium long staple compact cotton.



Red Bow – the classic collection with a twist. Our well-worked shirts with contrast details to suit different situations. Works fine as a business shirt and for more casual occasions. Non Iron, Taped Seams, Split Yoke. Most are made from 100 % premium long staple compact cotton.



Purple Bow – our trend collection. Here you find our latest, most fashionable products. This collection is always changing to meet the needs for fashion today and tomorrow. Non Iron, Taped Seams, Split Yoke.



Indigo Bow – the indigo bow line is all about casual style. Knitted shirts, jeans shirts, linen shirts. They are all 3 cm shorter than our business models. Enjoy our Tribute to Leisure.



Yellow Bow – our price & eco conscious shirt collection. Plenty of bang for your bucks. These shirts are made from various materials; lyocell, long staple Compact Cotton, organic cotton, recycled polyester, recycled polyamide and recycled Elastan.

Making the finer wear work

- From the office to the dinner party





BUSINESS CLASSICS

BLACK BOW 60 pg. 6

GREEN BOW 01 pg. 10

YELLOW BOW 50 pg. 12

BLACK BOW

THE ULTIMATE IRON FREE SHIRT WITH REVOLUTIONARY SPILL PROTECTION, AND PROBABLY THE LAST GREAT SHIRT YOU'LL EVER NEED. SAY GOODBYE TO IRONING, UNTIMELY COFFEE SPILLS AND BUSINESS LUNCH STAINS. THANKS TO ADVANCED NANOTEX TECHNOLOGY, THE BLACK BOW HAS YOUR BACK. BLACK BOW IS SET OUT TO BE THE WORLD'S BEST WORKING SHIRT. YOUR NOW ABLE TO TEST IT IN ITS NATURAL ENVIRONMENT - YOUR LIFE.

SPLIT YOKE

The construction of the yoke involves splitting the yoke, rotating the parts in the correct angle and sewing them back together. This allows the fabric a bit more stretch which gives you improved freedom of movement and a better fit. We also added mechanical stretch in the material to make it comfortable to look this sharp.



NEVER IRON

Everybody knows about Non Iron. Sometimes it's true and sometimes, not so much. We already have Non-Iron on most of our shirts, and we are confident that you have tried it and found it to be one of the ones that works. We were not content. There is still some room for improvement, said Tor Bjarne... Which of course there was. Enter; Never Iron. Life is bigger than creases.

A Never Iron shirt stays crisp through out the day, due to the taped seams and the wrinkle resist treatment. The activator for the Never Iron function is however moisture. So it needs to get damp or wet to straiten out the small amount of creases accumulated during the use of the shirt.



SOFT MODERN CUT AWAY COLLAR WITH HIDDEN BUTTON DOWN

No more of anti-gravity collar. These collartips stays put with the Hidden Button Down feature.

ELASTIC COLLAR BUTTON

In the strive to make the worlds best working shirt, we made a pledge to ourselves. Before retiring we would make a patented solution to the problem many (including ourselves) has. Closing the top button in the collar, is for some very uncomfortable or even impossible. This should be possible to amend.

We have taken the first step in that direction. The top collar button is fastened with elastic tread instead of the traditional one. This makes room for extra movement and is more comfortable to wear. A small, but important, step towards our big aim at making the finer wear work.



NANO TECHNOLOGY

Beside our regular acclaimed style and finish, we went further into the construction of the fabric. We went far into the fabric. We enhanced the fibres on a molecular level, maintaining the feel and look of the cotton, but made it more resistant towards liquids and oils. Both from the outside and the inside. So if you spill, or get a nervous sweat attack, minutes before your big meeting, you still look like a million bucks. Brush it of and nail that presentation.



J. HARVEST & FROST
CORPORATE SHIRTMAKER

SLIM FIT

M
39/40

NVR
IRON



WRINKLE
RESIST 6/6



STRETCH
2/6



WEIGHT
131 G/M²



NEVER-IRON



WATER, OIL
AND STAIN
REPELLENT

HIDDEN BUTTON DOWN COLLAR

ELASTIC TOP BUTTON THREAD

NANO TECHNOLOGY
WATER, OIL AND STAIN REPELLENT

MECHANICAL STRETCH

SOLID COLORS

100% LONG STAPLE 2-PLY COMPACT
COTTON, 131 G/M²

SPLIT BACK YOKE

NEVER IRON
TAPED MAIN-SEAMS (NO WRINKLES)

CLASSIC, PEARLWHITE 2,5 MM-THICK
BUTTONS

ROUND EDGE CUFF,
W. CUFFLINK HOLE

FLAT FRONT PLACKET

CURVED HEM



100 WHITE



500 SKYBLUE



900 BLACK

BLACK BOW 60 REGULAR

The ultimate iron free shirt with revolutionary spill protection, and probably the last great shirt you'll ever need. Say goodbye to ironing, untimely coffee spills and business lunch stains. Thanks to advanced nanotex technology, the Black Bow has your back. Black Bow is set out to be the world's best working shirt.

999,-

♂ REGULAR 2906001
♂ SLIM 2906002
♀ WOMAN 2906003

S-5XL
XS-XXL
XS-4XL







WRINKLE RESIST
6/6



STRETCH
0/6



WEIGHT
124 G/M²



NON-IRON

SEMI CUT-AWAY COLLAR

NON-IRON PATENTED ENVIRONMENTAL TREATMENT

SOLID COLORS

100% LONG STAPLE 2-PLY COMPACT COTTON,
124 G/M²

SPLIT BACK YOKE

TAPED MAIN-SEAMS (NO WRINKLES)

TALL, 4 MM-THICK BUTTONS

SINGLE ANGLE CUFF,
W. CUFFLINK HOLE

RAISED PLACKET

CURVED HEM



GREEN BOW 01

Nothing beats the clean look of a solid dress shirt.

But even at a solid color there are still some features that make our shirt stand out from the crowd. The shirt is crafted in our favorite high performance twill texture. This gives the perfect sheen to it, results in a substantial good hand feeling and makes it less transparent than similar white dress shirts. A split yoke in back, medium cut-away collar and a 35 mm raised placket set the edge for this sharp, but classic shirt.

829,-

REGULAR 2900101 ♂ S-5XL
SLIM 2900102 ♂ XS-XXL
WOMAN 2900103 ♀ XS-4XL
WOMAN RELAXED 2900104 ♀ XS-4XL



100 WHITE



500 SKY BLUE



560 MIDBLUE



600 NAVY



900 BLACK



911 GREY





WRINKLE RESIST
4/6



STRETCH
0/6



WEIGHT
134 G/M²



EASY CARE



ORGANIC
COTTON



RECYCLED
POLYESTER

SEMI CUT-AWAY COLLAR

EASY CARE

SOLID COLORS.

60% COTTON / 40% POLYESTER, FINE TWILL
FABRIC, 134 G/M²

SPLIT BACK YOKE

TAPED MAIN-SEAMS (NO WRINKLES)

TALL, 4 MM-THICK BUTTONS

SINGLE ANGLE CUFF,
W. CUFFLINK HOLE

RAISED PLACKET

CURVED HEM



YELLOW BOW 50

Yellow Bow 50 is a high performance shirt which is made in our favorite fine blended twill with an added unique Easy Care treatment. As always with taped seams and split yoke. Also available in short sleeves.

599,-

REGULAR 2905001 ♂
SLIM 2905002 ♂
WOMAN 2905003 ♀
S/S REGULAR 2905011 ♂
S/S SLIM 2905022 ♂

S-5XL
XS-XXL
XS-4XL
S-5XL
XS-XXL



100 WHITE



500 SKY BLUE



600 NAVY



900 BLACK



955 GREY



ALSO AVAILABLE IN SHORT
SLEEVES

* IN ORDER TO ACCHIVE THE CRISPY WHITE, THE COLOUR 100 IS NOT FROM ORGANIC COTTON.



BUSINESS CLASSICS
WITH A TWIST

RED BOW 20 pg. 16

RED BOW 24 pg. 17

RED BOW 29 pg. 19

RED BOW 120 pg. 21

RED BOW 122 pg. 22

YELLOW BOW 51 pg. 23



WRINKLE RESIST
6/6



STRETCH
0/6



WEIGHT
124 G/M²



NON-IRON

SEMI CUT-AWAY COLLAR

NON-IRON PATENTED ENVIRONMENTAL TREATMENT

SOLID COLORS WITH CONTRASTS

100% LONG STAPLE 2-PLY COMPACT COTTON,
124 G/M²

SPLIT BACK YOKE

TAPED MAIN-SEAMS (NO WRINKLES)

TALL, 4 MM-THICK BUTTONS

SINGLE ANGLE CUFF,
W. CUFFLINK HOLE

FLAT FRONT PLACKET

CURVED HEM



1066 WHITE/NAVY



109 WHITE/BLACK



5066 SKY BLUE/NAVY



605 NAVY/SKY BLUE



904 BLACK/RED

RED BOW 20

Through the Red Bow line we reinvent the classic shirt. By adding sophisticated colors and details we made it more modern and smart, but still kept it a classy business shirt.

The shirt is crafted in our favorite high performance twill texture. This gives the perfect sheen to it, results in a substantial good hand feeling and makes it less transparent than similar dress shirts.

929,-

REGULAR 2902001 ♂

SLIM 2902002 ♂

WOMAN 2902003 ♀

S-4XL

XS-XXL

XS-4XL



WRINKLE RESIST
6/6



STRETCH
0/6



WEIGHT
125 G/M²



NON-IRON

SEMI CUT-AWAY COLLAR

STRIPED POPLIN WEAVE

100% LONG STAPLE 2-PLY COMPACT COTTON,
125 G/M²

SPLIT BACK YOKE

TAPED MAIN-SEAMS (NO WRINKLES)

TALL, 4 MM-THICK BUTTONS

SINGLE ANGLE CUFF,
W. CUFFLINK HOLE

FLAT FRONT PLACKET

CURVED HEM



RED BOW 24

White thin stripes on a blue or grey anthracite base, makes it a stylish new version of the classic striped shirt. The shirt can perfectly match with all colors and patterns, and is an excellent choice if you should add some colors to your standard white & blue wardrobe.

The shirt is crafted in our favorite fine-twill fabric, for perfect performance. We added modern contrast details together with standard features like semi cut away collar, flat front, angle cuff and a split yoke in the back. The shirt is well-designed to take you from the office to the dinner party in one day.

929,-

REGULAR 2902401 ♂

SLIM 2902402 ♂

WOMAN 2902403 ♀

S-4XL

XS-XXL

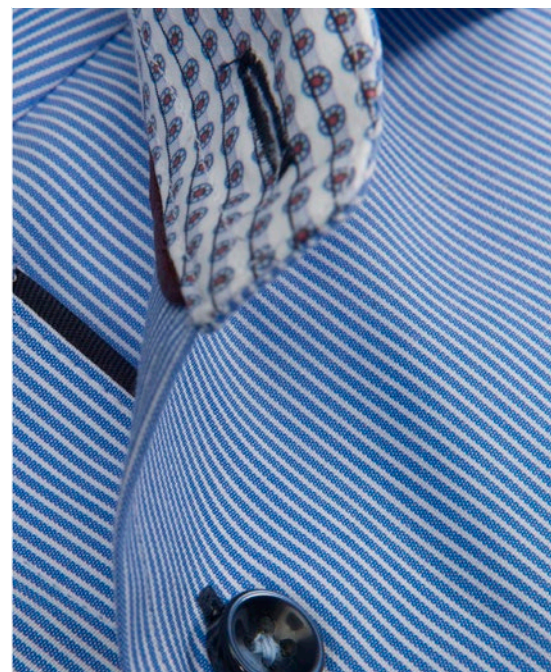
XS-4XL

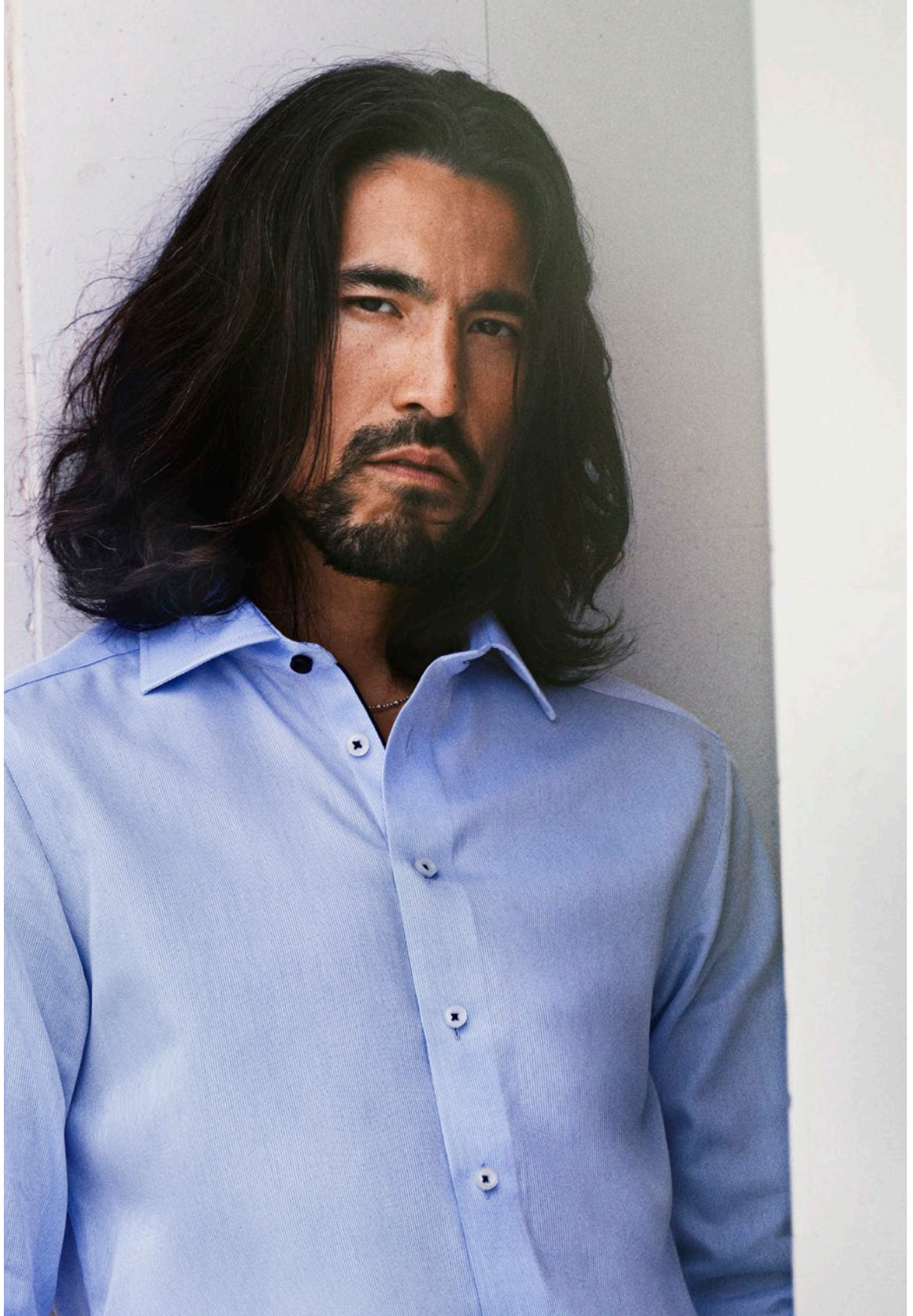


551 MIDBLUE STRIPE



951 GREY STRIPE







WRINKLE RESIST
6/6



STRETCH
2/6



WEIGHT
130 G/M²



NON-IRON

SEMI CUT-AWAY COLLAR

NON-IRON

SOLID COLORS WITH MODERATE CONTRASTS.

100% LONG STAPLE MICRO-CORD
BEDFORD STRUCTURE, 130 G/M²

SPLIT BACK YOKE

TAPED MAIN-SEAMS (NO WRINKLES)

TALL, 4 MM-THICK BUTTONS

SINGLE ANGLE CUFF,
W. CUFFLINK HOLE

FLAT FRONT PLACKET

CURVED HEM



RED BOW 29

The Bedford micro-cord structure in solid color gives the shirt class, and are well recommended for either business or a bit less formal occasions. The fabric is well known for us, and is aiming to be one of our top 3 classics. We also use this magnificent material in our Purple Bow 146 shirt. The typical Redbow line-shirt. Classical, yet detailed, giving the shirt a modern sophisticated look.

929,-

REGULAR 2902901 ♂
SLIM 2902902 ♂
WOMAN 2902903 ♀

S-4XL
XS-XXL
XS-4XL



100 WHITE



500 SKY BLUE







WRINKLE RESIST
6/6



STRETCH
0/6



WEIGHT
124 G/M²



NON-IRON

SEMI CUT-AWAY COLLAR

NON-IRON

INDIGO COLOR

100% LONG STAPLE 2-PLY COMPACT COTTON,
Twill WEAVE 124 G/M²

SPLIT BACK YOKE

TAPED MAIN-SEAMS (NO WRINKLES)

TALL, 4 MM-THICK BUTTONS

SINGLE ANGLE CUFF,
W. CUFFLINK HOLE

FLAT FRONT PLACKET

CURVED HEM



RED BOW 120

The perfect shirt for any occasion. With the characteristic indigo color, our famous non-iron fine twill fabric can remind you of a smart "jeans shirt". It is set up with a tone in tone paisley contrast pattern in collar & cuff, and white details in placket & button tread.

The typical Redbow line-shirt. Classical, yet detailed, giving the shirt a modern sophisticated look.

929,-

REGULAR 2912001 ♂
SLIM 2912002 ♂
WOMAN 2912003 ♀

S-4XL
XS-XXL
XS-4XL



550 INDIGO



WRINKLE RESIST
6/6



STRETCH
0/6



WEIGHT
124 G/M²



NON-IRON

SOFT MODERN CUT AWAY HIDDEN BUTTON
DOWN

NON-IRON

SOLID COLORS.

100% LONG STAPLE 2-PLY COMPACT COTTON,
Twill WEAVE. 124 G/M²

SPLIT BACK YOKE

TAPED MAIN-SEAMS (NO WRINKLES)

TALL, 4 MM-THICK BUTTONS

SINGLE ANGLE CUFF,
W. CUFFLINK HOLE

FLAT FRONT PLACKET

CURVED HEM



100 WHITE

500 SKY BLUE



560 MID BLUE

911 GREY

RED BOW 122

J. Harvest & Frost has been around a while by now. Many of our continuing shirts have had the time to turn into real classics. Time to gently renew one of our most popular models. Red Bow 122 is a new expression of Red Bow 20. Infallible model with new, modern details and the additional new hidden button-down collar which we love so much. We are ready for a new decade.

929,-

REGULAR 2912201 ♂

S-4XL

SLIM 2912202 ♂

XS-XXL

WOMAN 2912203 ♀

XS-4XL



WRINKLE RESIST
4/6



STRETCH
0/6



WEIGHT
134 G/M²



EASY CARE



ORGANIC
COTTON



RECYCLED
POLYESTER

SEMI CUT-AWAY COLLAR

EASY CARE

SOLID COLORS.

60% COTTON / 40% POLYESTER, FINE TWILL
FABRIC, 134 G/M²

SPLIT BACK YOKE

TAPED MAIN-SEAMS (NO WRINKLES)

TALL, 4 MM-THICK BUTTONS

SINGLE ANGLE CUFF,
W. CUFFLINK HOLE

FLAT FRONT PLACKET

CURVED HEM



YELLOW BOW 51

Yellow bow 51 is a high performance shirt which is made in a fine blended twill with an added unique Easy Care treatment and tailored details.

As always with taped seams and split yoke.

599,-



105 WHITE/SKY BLUE



505 SKY BLUE/NAVY



905 BLACK



955 GREY/BLACK

REGULAR 2905101 ♂

S-5XL

SLIM 2905102 ♂

XS-XXL

WOMAN 2905103 ♀

XS-4XL

* IN ORDER TO ACCHIVE THE CRISPY WHITE, THE COLOUR 100 IS NOT FROM ORGANIC COTTON.



SMART CASUAL

RED BOW 121 pg. 27

PURPLE BOW 142 pg. 29

PURPLE BOW 144 pg. 30

YELLOW BOW 52 pg. 31

PURPLE BOW 146 pg. 33





WRINKLE RESIST
5/6



STRETCH
4/6



WEIGHT
149 G/M²



NON-IRON

BUTTON DOWN COLLAR

OXFORD WEAVE

95% LONG STAPLE 2-PLY COMPACT COTTON,
5% ELESTANE, 149 G/M²

SPLIT BACK YOKE

NON-IRON

TAPED MAIN-SEAMS (NO WRINKLES)

TALL, 4 MM-THICK BUTTONS

ROUND EDGE-CUFF,
W. CUFFLINK HOLE

PASSPOILED POCKET (MEN'S)

FLAT FRONT PLACKET

CURVED HEM



100 WHITE



500 SKYBLUE



561 BLUE



600 NAVY

RED BOW 121

We might be one of very few brands that, at the present, can handle the combination NON IRON & STRETCH. It's a tricky combination, you see, which requires quite a lot of thinking, testing and developing to get all this performance into one single shirt. Luckily, we do enjoy the hard-work & developing. RB121 comes with stylish details, such as a passpoiled chest pocket and matching contrast colors at the right spots.

929,-

REGULAR 2912101 ♂
SLIM 2912102 ♂
WOMAN 2912103 ♀

S-4XL
XS-XXL
XS-4XL





WRINKLE RESIST
5/6



STRETCH
3/6



WEIGHT
145 G/M²



NON-IRON



FREEFIT STRETCH

SOFT MODERN CUT AWAY
HIDDEN BUTTON DOWN

NON-IRON

FREEFIT STRETCH

2 TONE COLOR OXFORD WEAVE

96% LONG STAPLE 2-PLY COMPACT
COTTON, 4% FREE FIT STRETCH, 145 G/M²

SPLIT BACK YOKE

TAPED MAIN-SEAMS (NO WRINKLES)

TALL, 4 MM-THICK BUTTONS

ROUND EDGE CUFF,
W. CUFFLINK HOLE

FLAT FRONT PLACKET

CURVED HEM



PURPLE BOW 142

Two tone seasonal color of sophisticated oxford fabric with incredible 20% stretch weft way, makes this shirt soft, super comfortable & yet a Non-Iron shirt. Maybe our best take on smart-casual yet. Our guess is this model will quickly become one of your wardrobe essentials.

999,-

REGULAR 2914201 ♂
SLIM 2914202 ♂
WOMAN 2914203 ♀

S-4XL
XS-XXL
XS-4XL



556 BLUE



762 GREEN



864 PURPLE



996 GREY



WRINKLE RESIST
4/6



STRETCH
2/6



WEIGHT
125 G/M²



NON-IRON



MECHANICAL
STRETCH



SUPERSOFT

SOFT MODERN CUT AWAY
HIDDEN BUTTON DOWN

NON-IRON

MECHANICAL STRETCH

TWO TONE INDIGO JAQUARD PATTERN

100% LONG STAPLE COTTON 125 G/M²

TAPED MAIN-SEAMS (NO WRINKLES)

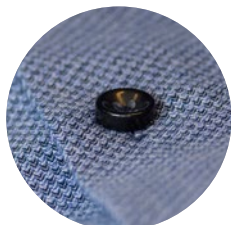
SPLIT BACK YOKE

TALL, 4 MM-THICK BUTTONS

SOFT ROUND EDGE CUFF,
W. CUFFLINK HOLE



556 INDIGO



PURPLE BOW 144

A lightweight non-iron dress shirt with brushed surface, that gives a unique, luxurious and super soft hand feeling. The shirt has a soft modern cut-away collar with hidden button-down function. Blue details in collar cuffs and buttoning. Easy to wear. Smart & casual.

899,-

REGULAR 2914401 ♂
SLIM 2914402 ♂
WOMAN 2914403 ♀

S-4XL
XS-XXL
XS-4XL



WRINKLE RESIST
4/6



STRETCH
4/6



WEIGHT
99 G/M²



EASY CARE



GENTLE ON SKIN



RECYCLED MATERIALS



STRETCH

SOFT MODERN CUT-AWAY COLLAR WITH
HIDDEN BUTTON DOWN

EASY CARE

STRETCH

SOLID COLOR DOBBY WEAVE

22% LONG STAPLE COMPACT COTTON,
51.5% TENCEL™ LYOCCELL, 22.5% RECYCLED
POLYAMIDE, 4% RECYCLED ELASTANE,
99 G/M²

SPLIT BACK YOKE

TALL, 4 MM-THICK BUTTONS

SOFT ROUND EDGE CUFF,
W. CUFFLINK HOLE

RAISED PLACKET

CURVED HEM



YELLOW BOW 52

This shirt is taking the price conscious Yellow Bow-line to the next level with its high performance and eco-conscious choice of raw materials.

A solid colored shirt with a subtle dobby structure combined with a soft collar and cuffs gives the shirt a smart & modern look. When you get the shirt in hand you will immediately recognize its more to it than catches the eye. The feather-light weight at first, silky soft hand-touch from Tencel™ as well, and the incredible stretch effect for your comfort, makes this shirt a master of performance. The shirt is also easy-care treated, so you can simply wash & wear it if you like.

729,-



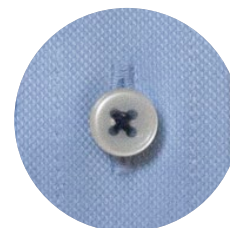
100 WHITE



500 SKYBLUE



900 BLACK



REGULAR 2905201 ♂
SLIM 2905202 ♂
WOMAN 2905203 ♀

S-5XL
XS-XXL
XS-4XL





WRINKLE RESIST
6/6



STRETCH
2/6



WEIGHT
130 G/M²



NON-IRON

EXTREME CUTAWAY COLLAR

NON-IRON

FINE MICROCORD BEDFORD STRUCTURE

100% LONG STAPLE COTTON, MICRO-CORD
BEDFORD STRUCTURE. 130 G/M²

SPLIT BACK YOKE

TAPED MAIN-SEAMS (NO WRINKLES)

LUXURIOUS, 4 MM THICK NAVY BUTTONS

SINGLE ANGLE CUFF,
W. CUFFLINK HOLE

FLAT FRONT PLACKET

CURVED HEM



PURPLE BOW 146

A new edgy shirt in the same spirit as the old Purple Bow 46. The microcord structure in the fabric that makes it stand out compared to our classic twill. The fabric in combination with extreme cut-away collar and a new kick-ass paisley contrast, makes a bold statement. The contrast is obvious on the white, and more discrete on the luxurious navy fabric. Wear it with jeans and a blazer or with a suit and sneakers and you will look impeccable, from the office to the dinner party.

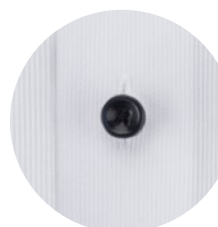
899,-



106 WHITE



606 NAVY



REGULAR 2914601 ♂
SLIM 2914602 ♂
WOMAN 2914603 ♀

S-4XL
XS-XXL
XS-4XL



PATTERNED

PURPLE BOW 48 pg. 37

PURPLE BOW 49 pg. 39

PURPLE BOW 141 pg. 40

PURPLE BOW 143 pg. 41

INDIGO BOW 37 pg. 43

YELLOW BOW 50 STRIPE pg. 45

YELLOW BOW 53 pg. 47

Still ra

Love life
at shore's
most





WRINKLE RESIST
5/6



STRETCH
2/6



WEIGHT
130 G/M²



NON-IRON



MECHANICAL STRETCH

SOFT MODERN CUT AWAY HIDDEN BUTTON
DOWN

NON-IRON

INNOVATIVE MECHANICAL STRETCH

BLUE TONED JACQUARD FABRIC, WOVEN IN
A FINE MICRO-PATTERN

100% LONG STAPLED 2-PLY COMPACT
COTTON. 130 G/M²

SPLIT BACK YOKE

TAPED MAIN-SEAMS (NO WRINKLES)

CLASSIC, PEARLWHITE 2,5 MM-THICK
BUTTONS

SOFT ROUND EDGE CUFF,
W. CUFFLINK HOLE

FLAT FRONT PLACKET
CURVED HEM



PURPLE BOW 48

Blue/white patterned shirt. A double 100's jacquard fabric, with a nice modern micro-pattern. Combine it with the full suit or a more relaxed look together with jeans, either way it will serve you good.

Our newly developed fabric is made with a mechanical stretch for better comfort.

The mechanical stretch is a new innovative way of giving comfort to a 100% natural long stapled, compact cotton fabric. It will give natural elasticity to the shirt of up to 12% stretch the weft way, and still keep our great NON-IRON performance. This is innovative shirt-making at its best, and we enjoy taking part of it.



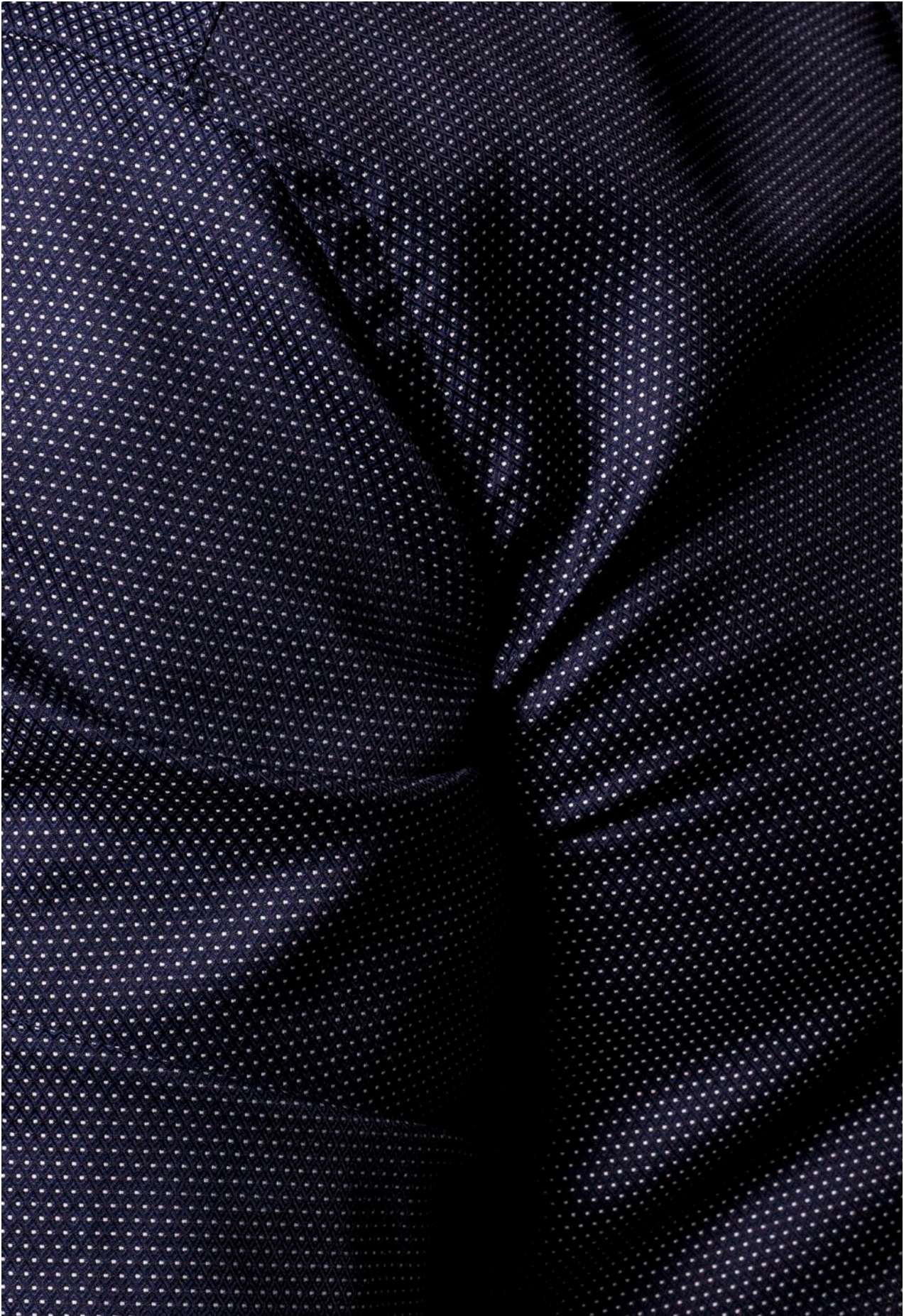
566 BLUE PATTERN



999,-

REGULAR 2904801 ♂
SLIM 2904802 ♂
WOMAN 2904803 ♀

S-4XL
XS-XXL
XS-4XL





WRINKLE RESIST
5/6



STRETCH
2/6



WEIGHT
130 G/M²



NON-IRON



MECHANICAL STRETCH

SOFT MODERN CUT AWAY
HIDDEN BUTTON DOWN

INNOVATIVE MECHANICAL STRETCH

NAVY JAQUARD FABRIC , WOVEN WITH
WHITE MICRO DOTS

100% LONG STAPLED 2-PLY COMPACT
COTTON, 130 G/M²

SPLIT BACK YOKE

TAPED MAIN-SEAMS (NO WRINKLES)

CLASSIC, PEARLWHITE
2,5 MM-THICK BUTTONS

SOFT ROUND EDGE CUFF,
W. CUFFLINK HOLE

FLAT FRONT PLACKET

CURVED HEM



PURPLE BOW 49

A double 100's jacquard fabric, woven with white dots on navy background for a modern and sophisticated look. Combine it with the full suit or together with jeans, either way it will serve you good.

Our newly developed fabric is made with a mechanical stretch for better comfort.

The mechanical stretch is a new innovative way of giving comfort to a 100% natural long stapled, compact cotton fabric. It will give natural elasticity to the shirt of up to 12% stretch the weft way, and still keep our great NON-IRON performance.

This is innovative shirt-making at its best, and we enjoy taking part of it.



601 NAVY/WHITE DOT



999,-

REGULAR 2904901 ♂

S-4XL

SLIM 2904902 ♂

XS-XXL

WOMAN 2904903 ♀

XS-4XL



WRINKLE RESIST
5/6



STRETCH
5/6



WEIGHT
125 G/M²



NON-IRON



360° STRETCH

SOFT MODERN CUT AWAY
HIDDEN BUTTON DOWN

360° STRETCH

NON-IRON

MINI-CHECKS PATTERN

90% LONG STAPLE 2-PLY COMPACT
COTTON, 10% ELASTANE,
POPLIN WEAVE, 125 G/M²

SPLIT BACK YOKE

TAPED MAIN-SEAMS (NO WRINKLES)

CLASSIC, NAVY 2,5 MM-THICK BUTTONS

ROUND EDGE CUFF,
W. CUFFLINK HOLE

FLAT FRONT PLACKET

CURVED HEM



313 ORANGE CHECK



515 BLUE CHECK



616 NAVY CHECK



PURPLE BOW 141

4-way stretch fabric with NON IRON treatment is another new and innovative performance made by us. With a 360 degree stretch ability, the shirt is as comfortable as a woven dress-shirt can get. It works with you in your every movement. The shirt is crafted in light-weight soft hand-touched poplin. With versatile Mini-checks, this shirt suits all looks from the office to the less formal occasions.

899,-

REGULAR 2914101 ♂
SLIM 2914102 ♂
WOMAN 2914103 ♀

S-4XL
XS-XXL
XS-4XL



WRINKLE RESIST
5/6



STRETCH
2/6



WEIGHT
122 G/M²



NON-IRON



MECHANICAL STRETCH

SOFT MODERN CUT AWAY
HIDDEN BUTTON DOWN

MECHANICAL STRETCH

TWO TONE INDIGO COLOR PAISLEY

100% LONG STAPLE COMPACT COTTON,
FINE TWILL, 122 G/M²

SPLIT BACK YOKE

TAPED MAIN-SEAMS (NO WRINKLES)

TALL, 4 MM-THICK BUTTONS

SOFT ROUND EDGE CUFF,
W. CUFFLINK HOLE

FLAT FRONT PLACKET

CURVED HEM



PURPLE BOW 143

A new discrete but bold indigo colored paisley pattern shirt. Dress it up & bold with a tie, or down with your slacks, either way it lets you stay comfortable & sharp all day with our famous Non- iron and natural stretch performance. Innovation and smartness walk hand in hand!

899,-

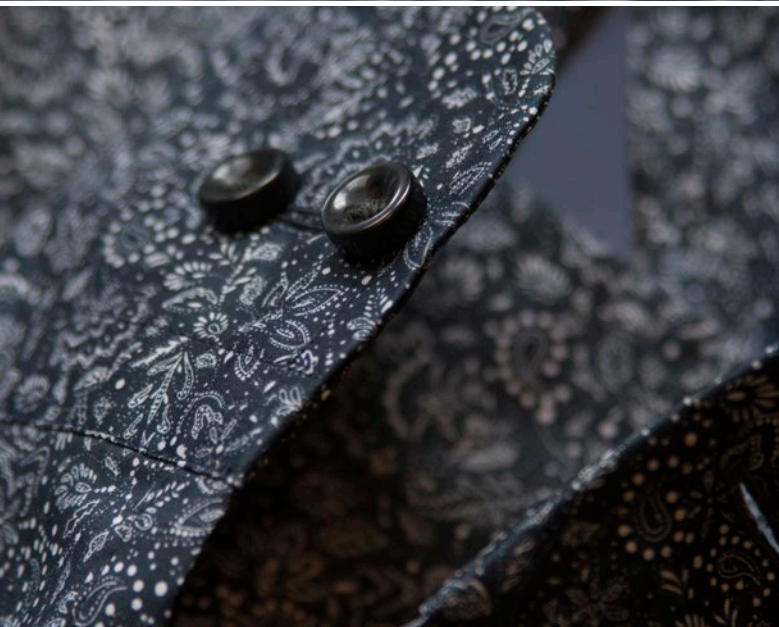


551 INDIGO PAISLEY



REGULAR 2914301 ♂
SLIM 2914302 ♂
WOMAN 2914303 ♀

S-4XL
XS-XXL
XS-4XL





WRINKLE RESIST
4/6



STRETCH
0/6



WEIGHT
95 G/M²



EASY CARE



LIGHT
WEIGHT



LEISURE STYLE

SOFT MODERN CUT-AWAY COLLAR
WITH HIDDEN BUTTON-DOWN

EASY CARE

NAVY BACKGROUND WITH
WHITE FLORAL PRINT

100% COMPACT COTTON, POPLIN WEAVE,
95 G/M²

SPLIT BACK YOKE

TALL, 4 MM-THICK BUTTONS

SOFT ROUND EDGE CUFF,
W. CUFFLINK HOLE

FLAT FRONT PLACKET

CURVED HEM



INDIGO BOW 37

An elegant, bold & modern paisley shirt, printed on a crisp and super light poplin fabric. This stylish shirt has a soft modern cut-away collar with hidden button-down function and Easy-care fabric performance.

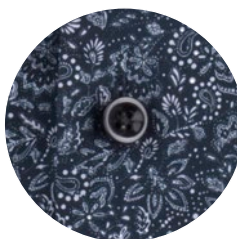
999,-

REGULAR 2903701 ♂
SLIM 2903702 ♂
WOMAN 2903703 ♀

S-4XL
XS-XXL
XS-4XL



601 NAVY FLORAL



LEISURE STYLE MODELS ARE 3 CM SHORTER THAN OUR BUSINESS MODELS





WRINKLE RESIST
4/6



STRETCH
0/6



WEIGHT
134 G/M²



EASY CARE



ORGANIC
COTTON



RECYCLED
POLYESTER

SEMI CUT-AWAY COLLAR

EASY CARE

BENGAL BUSINESS STRIPES.

60% ORGANIC COTTON / 40% RECYCLED
POLYESTER, FINE TWILL, 134 G/M²

SPLIT BACK YOKE

TAPED MAIN-SEAMS (NO WRINKLES)

TALL, 4 MM-THICK BUTTONS

SINGLE ANGLE CUFF,
W. CUFFLINK HOLE

RAISED PLACKET

CURVED HEM



YELLOW BOW 50 STRIPE

Yellow Bow 50 is a high performance shirt which is made in our favorite fine blended twill with an added unique Easy Care treatment. As always with taped seams and split yoke.

599,-



501 SKY BLUE/STRIPE



601 NAVY/STRIPE



REGULAR 2905001 ♂
SLIM 2905002 ♂
WOMAN 2905003 ♀

S-5XL
XS-XXL
XS-4XL

HARVEST & FROST
PORATE SHIRTMAKER

M
39/40

517





WRINKLE RESIST
4/6



STRETCH
4/6



WEIGHT
99 G/M²



EASY CARE



GENTLE ON
SKIN



RECYCLED
MATERIALS



STRETCH

SOFT MODERN CUT-AWAY COLLAR
WITH HIDDEN BUTTON DOWN

EASY CARE

STRETCH

FINE TWILL WEAVE, CHECK PATTERN

22% LONG STAPLE COMPACT COTTON,
51.5% LYOCELL, 22.5% RECYCLED POLYAMIDE,
4% RECYCLED ELASTANE, 99 G/M²

SPLIT BACK YOKE

TALL, 4 MM-THICK BUTTONS

SOFT ROUND EDGE CUFF,
W. CUFFLINK HOLE

FLAT FRONT PLACKET

CURVED HEM

YELLOW BOW 53

This shirt is taking the price conscious Yellow Bow-line to the next level with its high performance and eco-conscious choice of raw materials. A modern check-pattern at a fine twill weave combined with soft collar and cuffs gives the shirt a smart look. When you get the shirt in hand you will immediately recognize its more to it than catches the eye. The feather-light weight at first, silky soft hand-touch from lyocell as well, and the incredible stretch effect for your comfort, makes this shirt a master of performance. The shirt is also easy-care treated, so you can simply wash & wear it if you'd like.

599,-

REGULAR 2905301 ♂
SLIM 2905302 ♂
WOMAN 2905303 ♀

S-5XL
XS-XXL
XS-4XL



501 SKY BLUE CHECK



601 NAVYCHECK



CASUAL SHIRTS

INDIGO BOW 33 pg. 51

INDIGO BOW 34 pg. 53

INDIGO BOW 130 pg. 54

INDIGO BOW 131 pg. 55

YELLOW BOW 54 pg. 57

INDIGO BOW 30 pg. 58





WRINKLE RESIST
1/6



STRETCH
0/6



WEIGHT
119 G/M²



GARMENT
WASHED



SUPERSOFT



BREATHABLE



LEISURE STYLE



SMALL CUT-AWAY COLLAR. LIGHTWEIGHT
INTERLINING FOR SOFT TOUCH

SUPERSOFT GARMENT WASH

2 TONE PLAIN WEAVE

100% LINEN, 119 G/M²

SPLIT BACK YOKE

CLASSIC, 2,5 MM-THICK BUTTONS

SOFT ROUND EDGE CUFF,
W. CUFFLINK HOLE

RAISED PLACKET

CURVED HEM

INDIGO BOW 33

"Summer in a shirt". Tropical colors, authentic, characteristic wrinkling texture, casual, refined, vacation. All words describing our classical airy open weaved 100% linen shirt. The only shirt that deserves to be wrinkled and looks better this way. The shirt ages with beauty and only improves over time. So grab your gear, and get ready for summer.

999,-

REGULAR 2903301 ♂
SLIM 2903302 ♂
WOMAN 2903303 ♀

S-4XL
XS-XXL
XS-4XL



100 WHITE



310 ORANGE



410 RED



510 SKYBLUE



710 GREEN





WRINKLE RESIST
4/6



STRETCH
6/6



WEIGHT
160 G/M²



KNITTED FABRIC



360° STRETCH



LEISURE STYLE

SOFT MODERN CUT AWAY
HIDDEN BUTTON DOWN

360° STRETCH

SOLID COLORS.

100% LONG STAPLE 2-PLY COMPACT COTTON,
PIQUÉ-KNITTED, 160 G/M²

SPLIT BACK YOKE

SOFT ROUND EDGE PEARLWHITE
BUTTONS, FOR A LUXURIOUS LOOK

SOFT ROUND EDGE CUFF,
W. CUFFLINK HOLE

FLAT FRONT PLACKET

CURVED HEM

INDIGO BOW 34

It has the look of a classic woven dress shirt, but indeed it is a knitted shirt.

Combining the best from two worlds, makes this the world's most comfortable good looking dress shirt. It is like wearing a t-shirt, incredible comfort.

We makes this happen by using high-end double 60 compact yarn, and a soft treatment. This gives the shirt a luxurious out-view and silky touch. Also, when using high quality yarn in a knitted fabric, you get a natural non-iron performance, so you simply wash it, hang dry it and wear it.

We have strong confident in this new and innovative way of making fine-shirts. And by this we are looking forward to develop more colors and patterns to the knitted program. Enjoy!

899,-



REGULAR 2903401 ♂
SLIM 2903402 ♂
WOMAN 2903403 ♀

S-4XL
XS-XXL
XS-4XL



100 WHITE



500 SKYBLUE



550 BLUE-/WHITE STRIPE



600 NAVY

THESE SHIRTS ARE 3 CM SHORTER THAN OUR REGULAR BUSINESS MODELS



WRINKLE RESIST
4/6



STRETCH
3/6



WEIGHT
116 G/M²



EASY CARE



SUPERSOFT



GARMENT
WASHED



STRETCH



LEISURE STYLE

SOFT MODERN CUT AWAY
HIDDEN BUTTON DOWN

EASY CARE

STRETCH

INDIGO BLUE COLOR. GARMENT WASHED

95% LONG STAPLE COMPACT COTTON 5%
ELASTANE, FINE TWILL ,116 G/M²

SPLIT BACK YOKE

TALL, 4 MM-THICK BUTTONS

SOFT ROUND EDGE CUFF,
W. CUFFLINK HOLE

FLAT FRONT PLACKET

CURVED HEM

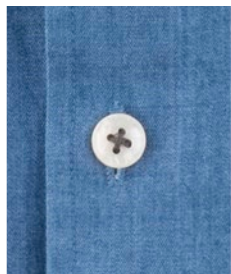
INDIGO BOW 130

Indigo Bow 130 is a supersoft, light weighted, garment washed jeans shirt, with stretch and Easy Care treatment. Smart & casual, soft & light, comfortable & easy to care for. Simply a combination of all good qualities. Enjoy.

999,-



550 INDIGO



REGULAR 2913001 ♂
SLIM 2913002 ♂
WOMAN 2913003 ♀

S-4XL
XS-XXL
XS-4XL



WRINKLE RESIST
5/6



STRETCH
6/6



WEIGHT
135 G/M²



LIGHT WEIGHT



KNITTED FABRIC



360° STRETCH



LEISURE STYLE

SOFT MODERN CUT AWAY
HIDDEN BUTTON DOWN

360° STRETCH

3 DIFFERENT PRINTS IN
THREE COLORWAYS

100% LONG STAPLE
2-PLY COMPACT COTTON,
PIQUÉ-KNITTED, 135 G/M²

SPLIT BACK YOKE

LUXURIOUS, 4 MM THICK
NAVY BUTTONS

SOFT ROUND EDGE CUFF,
W. CUFFLINK HOLE

FLAT FRONT PLACKET

CURVED HEM

INDIGO BOW 131

Knitted from the finest long staple compact cotton, for softness and comfyness. This shirt makes you look your best, while feeling like wearing a T-shirt. Combining the best of two worlds, probably the world's most comfortable good looking dress shirt. We make this happen by using high-end double 60 compact yarn, and a soft treatment. This gives the shirt a luxurious look and a smooth, silky touch. Also, when using high quality yarn in a knitted fabric, you get a natural non-iron performance. Simply wash it, hang dry and wear it. Button under collar for the perfect stand. It comes in 3 stylish and modern prints. Enjoy!

999,-

REGULAR 2913101 ♂
SLIM 2913102 ♂
WOMAN 2913103 ♀

S-4XL
XS-XXL
XS-4XL



005 SKY BLUE PRINT



006 NAVY PRINT



055 BLUE PRINT



J. HARVEST & FROST
CORPORATE SHIRTMAKER

M
39/40

REGULAR FIT





WRINKLE RESIST
4/6



STRETCH
5/6



WEIGHT
160 G/M²



EASY CARE



STRETCH



LEISURE STYLE



BUTTON DOWN COLLAR

EASY CARE

STRETCH

SOLID COLORED OXFORD WEAVE

71% LONG STAPLE COTTON, 25% LYOCELL, 4% ELASTANE. 160 G/M²

SPLIT BACK YOKE

BOX PLEAT AT BACK

PEARLWHITE BUTTONS

SOFT ROUND EDGE CUFF,
W. CUFFLINK HOLE

CHEST POCKET ON MENS STYLE

RAISED PLACKET

CURVED HEM

YELLOW BOW 54

This leisure Oxford shirt is a new version of our classic IB 30. It has the same classic look, but is new in many other ways. The fabric is a mix of long staple cotton, Lyocell & Elastane. This gives the shirt following performance.

Luxurious handfeel and outview from the lyocell and extreme stretch comfort from elastane. The shirt has also Easy Care performance so you simply wash, grab & go.

Our Leisure models are 3cm shorter than our business models.

599,-

REGULAR 2905401 ♂

S-5XL

SLIM 2905402 ♂

XS-XXL

WOMAN 2905403 ♀

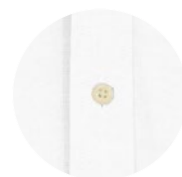
XS-4XL



100 WHITE



500 SKY BLUE



600 NAVY



900 BLACK



LEISURE STYLE MODELS ARE 3 CM SHORTER THAN OUR BUSINESS MODELS



WRINKLE RESIST
2/6



STRETCH
0/6



WEIGHT
160 G/M²



GARMENT
WASHED



SUPERSOFT



LEISURE STYLE

BUTTON DOWN COLLAR

DURABLE WASH- PEACHED SURFACE

SOLID COLOR OXFORD WEAVE.

100 % COTTON, 160 G/M².

SPLIT BACK YOKE

CHEST POCKET ON MENS STYLE

NATURAL WHITE BUTTONS

EDGE BARREL CUFF,
W. CUFFLINK HOLE

RAISED PLACKET

CURVED HEM



450 PINK

INDIGO BOW 30

Our Indigo Bow oxford shirt is crafted of carefully selected fabric and finishing that gives the right soft and worn feeling. It is a worker-shirt that is already "worked-in".

699,-

REGULAR 2903001 ♂
SLIM 2903002 ♂
WOMAN 2903003 ♀

S-4XL
XS-XXL
XS-4XL







SWEATERS

MERINO V pg. 62

MERINO U pg. 64



WRINKLE RESIST
2/6



STRETCH
4/6



WEIGHT
280 G/M²



SUPERWASH



MERINO WOOL



MECHANICAL STRETCH

70% CERTIFIED MERINO WOOL,
30% LONG STAPLE PIMA COTTON

V-NECK COLLAR

RAGLAN SLEEVES

MACHINE WASHABLE

LESS PILLING



600 NAVY



900 BLACK



909 GREY MELANGE



910 LIGHT GREY MELANGE

MERINO V

We mixed extra-fine Merino Wool/ Cotton yarn to get an all-season garment and benefits from 2 natural fibers. To keep up our responsible work as a brand, we use certified wool and carefully selected long staple U.S. Pima cotton. You can of course wash it in a washing machine. But keep in my mind – this is a Merino garment, it benefits of not being washed so often. Simply air it out when needed.

The yarn is a compact yarn with extra high twist. We added "super wash"-treatment, a technique in yarn production, for less pilling. In addition we made it with long staple U.S. Pima Cotton. This way we can make sure of high quality, soft touch and high performance. We aim for the best only. High quality & high performance.

799,-



MERINO V
♂ 2930101 S-4XL



MERINO V WOMAN
♀ 2930103 XS-3XL





WRINKLE RESIST
2/6



STRETCH
4/6



WEIGHT
280 G/M²



SUPERWASH



MERINO WOOL



MECHANICAL STRETCH

70% CERTIFIED MERINO WOOL,
30% LONG STAPLE PIMA COTTON

U-NECK COLLAR

RAGLAN SLEEVES

MACHINE WASHABLE

LESS PILLING



600 NAVY



900 BLACK



909 GREY MELANGE



910 LIGHT GREY MELANGE

MERINO U

We mixed extra-fine Wool/ Cotton yarn to get an all-season garment and benefits from 2 natural fibers. To keep up our responsible work as a brand, we use certified wool and care- fully selected long staple U.S. Pima cotton. You can wash it in a washing machine, but keep in mind, this is a Merino garment, and have benefits of not needing to be washed so often, simply air it out when needed.

The yarn is a compact yarn with extra high twist. We added "super wash"- treatment for less pilling. In addition we made it with long staple U.S. Pima Cotton. This way we can make sure of high quality, soft touch and high performance. We aim for the best only. High quality & high performance.

799,-



MERINO U
♂ 2930201 S-4XL



MERINO U WOMAN
♀ 2930203 XS-3XL





SUITS & BLAZERS

CLASSIC BLAZER 20 pg. 68

CLASSIC TROUSER pg. 69

CLUB BLAZER 30 pg. 70

CASUAL BLAZER pg. 71

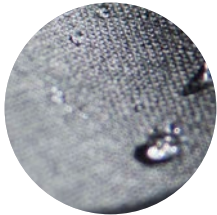
CLASSIC BLAZER 20



TURN UP CHEST POCKET
INTERIOR AS HANDKERCHIEF



ANTISTATIC FABRIC



WATER REPELLENT FINNISH



360 ° STRETCH



REGULAR



WOMAN



600 NAVY



650 NAVY MELANGE



900 BLACK



980 GREY



LIGHT WEIGHT



WATER
REPELLENT



STRETCH

CLASSIC BLAZER 20 MAN 2962001 ♂ 44-62
CLASSIC BLAZER 20 WOMAN 2962003 ♀ 32-48

The water repellent high performance 4-way stretch blazer provides freedom to move in every moment. Gone are the days of stiff, uncomfortable dressing. Even let sudden changes in the weather roll right of your back with an innovative finish that actively repels water from your blazers surface. Lightweight soft rounded shoulders and light fusing together with AMF stitching at seams, gives the blazer a stylishly relaxed yet classy and formal look. Perfect for any occasion. Inside, the blazer is set up with soft viscose lining in elegant color combinations. In addition the sleeve lining is has been treated with an antibacterial finish, to help you prevent any unwanted odor during the hard working day.

2699,-

86% WOOL, 8,5% POLYESTER + 5% LYCRA, 0,5% ANTISTATIC
HIGH PERFORMANCE 4-WAY STRETCH FABRIC.
BREATHABLE, LIGHTWEIGHT 260 GRAM
ENVIRONMENTAL FRIENDLY WATER REPELLENT FINNISH.
TURN UP CHEST POCKET INTERIOR AS HANDKERCHIEF
TWO-BUTTON CLOSURE.
DOUBLE VENTED BACK HEM FOR MAN BLAZER. (NO VENTS
FOR WOMAN BLAZER)
WELT POCKET AT CHEST AND 2 FLAP POCKETS AT WAIST.
SLEEVES WITH 4 KISSING BUTTONS.
REGULAR FIT (BETWEEN SLIM AND REGULAR) FOR BOTH
MAN & WOMAN
FULLY LINED. SOLID LINING IN BODY + PATTERNED LINING
IN SLEEVE.
4 INSIDE POCKETS.

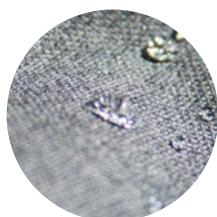
CLASSIC TROUSER



HOOK AND YKK ZIPPER



ANTISTATIC KNEE LINED



WATER REPELLENT FINNISH



360 ° STRETCH



REGULAR FIT
- STRAIGHT LEG - FLAT FRONT



600 NAVY

650 NAVY MELANGE

900 BLACK

980 GREY

CLASSIC TROUSER 2966121 ♂

44-62

These stylish flat front trousers in water repellent high performance 4-way stretch fabric provide freedom to move in every moment. It is as comfortable as it gets. Even let sudden changes in the weather roll right of with an innovative finish that actively repels water from your trousers surface. The press in trouser is carefully finished with the innovative and patented Supercrease treatment. Which keeps the permanent press in the trouser. Soft inner waistband tailored from main fabric, allowing extra stretch for more comfortable movement. Knee lined, with soft viscose. Pair them with our classic blazer for a full suit, or solo with a crispy shirt for the smart, effortless office look.

89% WOOL, 6% POLYESTER, 5% LYCRA, 0,5% ANTISTATIC
KNEE LINED: 55% POLYESTER, 45% VISCOSE
HIGH PERFORMANCE 4-WAY STRETCH FABRIC, BREATHABLE,
LIGHTWEIGHT 260 GRAM,
ENVIRONMENTAL FRIENDLY WATER REPPPELENT FINISH.
REGULAR FIT.
STRAIGHT LEG.
FLAT FRONT.
WELT POCKET AT BACK, FRONT POCKET IN SIDE WITH AMF
STITCHING AT WAIST.
HOOK AND YKK ZIPPER IN FRONT WITH AMF STICING AT
COVER.



WATER
REPELLENT



STRETCH

1499,-

CLUB BLAZER 30



KISSING BUTTONS



TURN UP CHEST POCKET INTERIOR AS HANDKERCHIEF



HALF LINED, BUTTERFLY STYLE



70% WOOL, 30 % POLYESTER FREEFIT



MAN



WOMAN



209 BROWN MELANGE



600 NAVY



909 GREY MELANGE



STRETCH

CLUB BLAZER 30 MAN 2963001 ♂
CLUB BLAZER 30 WOMAN 2963003 ♀

44-62
32-48

Our modern stretch Club blazer is made with super soft shoulders, a tailored waist and half lined butterfly interior. It features generous a notch lapel, patch side pockets, welt chest pocket and double vents in back. The fabric construction has a fairly rough out-view for a less formal yet smart vibe. Wear it with your favorite denims or combine it with our classic trouser for a contemporary, formal look.

2699,-

70% WOOL, 30 % POLYESTER FREEFIT

8 CM NOTCH LAPEL

TURN UP CHEST POCKET INTERIOR AS HANDKERCHIEF

TWO-BUTTON CLOSURE

NO VENTS ON WOMAN BLAZER

WELT POCKET AT CHEST AND 2 PATCH POCKETS AT WAIST

SLEEVES WITH 4 KISSING BUTTONS

REGULAR FIT (BETWEEN SLIM AND REGULAR) FOR BOTH MAN & WOMAN STYLES

HALF LINED, BUTTERFLY STYLE. SOLID COLOR LINING IN BODY + PATTERNED LINING IN SLEEVE

3 INSIDE POCKETS.

CASUAL BLAZER



SOFT SHOULDERS



JERSEY MATERIAL



PATCH POCKETS
NO CHEST POCKET



FULLY LINED



MAN



WOMAN



600 NAVY

CASUAL BLAZER 2964001 ♂

46-60

From a distance, it might look like a formal blazer, but up close, it's a soft, casual dream. The jersey fabric is extremely comfortable, lightweight and stretchy. With its wrinkle resist, it's perfect for travel. You'll both look and feel your best in this hybrid, sweatshirt-meets-overshirt-meets-blazer. We encourage you to match it with shirts from any of our Bows. Dress it up or dress it down, all year around.

1699,-

60% COTTON, 40 % POLYESTER
CLEAN CHEST (NO CHEST POCKET)
TWO-BUTTON CLOSURE
NO VENTS
2 PATCH POCKETS AT WAIST
REGULAR FIT (BETWEEN SLIM AND REGULAR)
FOR BOTH MAN & WOMAN STYLES
FULLY LINED



COATS

TECHNICAL CITY COAT pg. 74

TECHNICAL PARKA pg. 75

TECHNICAL CITY COAT



REFLECTIVE VISIBILITY DETAILS



360° STRETCH



WATER PROOF YKK ZIPPERS



INSULATION- PRIMALOFT SILVER



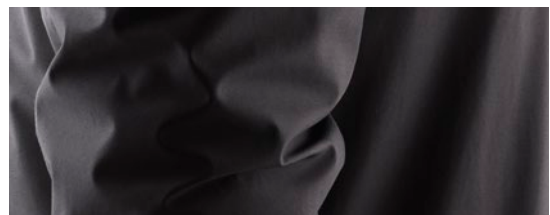
MAN



WOMAN



900 BLACK



LIGHT WEIGHT



WATER REPELLENT



360 °STRETCH

TECHNICAL CITY COAT 2990001 ♂
TECHNICAL CITY COAT WOMAN 2990003 ♀

S-3XL
XS-XXL

This is an exceptional light, comfortable and nice fitted ¾ length city-jacket. Suits any situation or weather condition, either it is on the way to a business meeting, or a late night stroll in the park. The main Technical features are 360 degree stretch, thin Primaloft-Silver insulation, water and wind proof. This highly technical, extreme lightweight car-coat is perfect for usage in the -5°C To +15°C temperature range.

2999,-

EXCEPTIONAL LIGHTWEIGHT 600G.
OUTERSHELL - 87% POLYAMIDE- 13% ELASTANE.
360 DEGREE STRETCH
INSULATION- PRIMALOFT SILVER- 60 G.
10 000 MM. WATER PROOFED. (WP)
10 000 G. BREATHABILITY. (MVP)
DWR COATED WATER REPELLENCY.
TWO WAY YKK ZIPPER IN FRONT PLACKET.
WATER PROOF YKK ZIPPERS AT SIDES + CHEST POCKET.
REFLECTIVE VISIBILITY DETAILS AT FRONT AND BACK FOR SAFETY.
MAGNET LOCKING AT PLACKET, SPLIT & INSIDE POCKET.

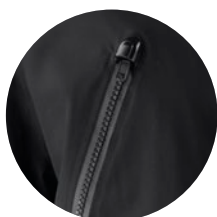
TECHNICAL PARKA



REFLECTIVE VISIBILITY DETAILS



360° STRETCH



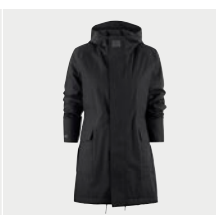
WATER PROOF YKK ZIPPERS



INSULATION- PRIMALOFT SILVER



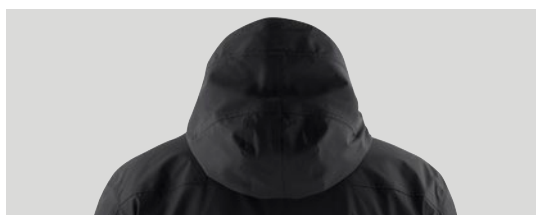
MAN



WOMAN



900 BLACK



TECHNICAL PARKA 2990201 ♂
TECHNICAL PARKA WOMAN 2990203 ♀

S-3XL
XS-XXL

The popularity of our technical car coat, and the good test reports, made it necessary for us to make a hooded version. And so was the parka born. It has the same technical performances as the car-coat, but we made it with a bit more bold attitude of a "big city-parka". Outside front pockets, long sloping tail in the back and more straight fit. The way you would want to wear it, providing you with the right feeling of style, luxury and versatility in any given day or occasion.

The main Technical features are 360 degree stretch, thin Primaloft-Silver insulation, water and wind proof. This highly technical, extreme lightweight parka is perfect for usage in the -15°C To +15°C temperature range.

3499,-

EXCEPTIONAL LIGHTWEIGHT 800G.
OUTERSHELL - 87% POLYAMIDE- 13% ELASTANE.
360 DEGREE STRETCH
INSULATION- PRIMALOFT SILVER- 80 G.
10 000 MM. WATER PROOFED.
10 000 G. BREATHABILITY.
DWR COATED WATER REPELLENCY.
TWO WAY YKK ZIPPER IN FRONT PLACKET.
WATER PROOF YKK ZIPPERS AT CHEST POCKET.
4 OUTSIDE POCKETS.
2 BIG OUTSIDE POCKETS IN FRONT WITH FLAP COVER AND MAGNET LOCKING AND TWO ZIPPED POCKETS AT CHEST.
REFLECTIVE VISIBILITY DETAILS AT FRONT, BACK AND HOOD FOR SAFETY.
MAGNET LOCKING AT PLACKET AND SIDE POCKETS.



LIGHT WEIGHT



WATER REPELLENT



360 °STRETCH



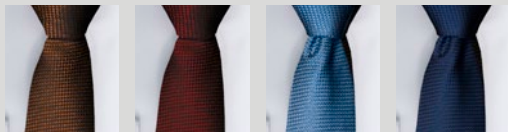
ACCESSORIES

CUFFLINKS pg. 78

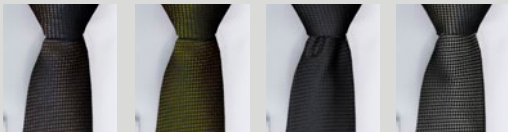
SOCKS pg. 78

TIES pg. 78

HANDKERCHIEFS pg. 79



303 ORANGE 490 WINE 500 LIGHT BLUE 600 NAVY



250 BROWN 700 GREEN 900 BLACK 980 GREY

TIE SILK OXFORD 2910300

Monotone silk tie with oxford weave structure.

100% Silk One Size

199,-



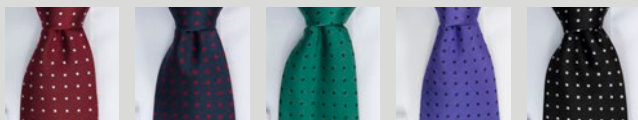
602 NAVY / BROWN 603 NAVY / WINE 607 NAVY / GREEN 608 NAVY / PURPLE

TIE STRIPED 2910200

Complete the look with our fabulous regimental striped ties. We use high tech microfibers in these ties because, well you know... You might spill that soup. Micro fibers doesn't absorb. A quick rinse and voilà. Clean and as good as new.

100% microfiber One Size

99,-



301 RED / WHITE 604 NAVY / RED 706 GREEN / NAVY 806 NAVY / PURPLE 901 BLACK / WHITE

TIE DOTTED 2910100

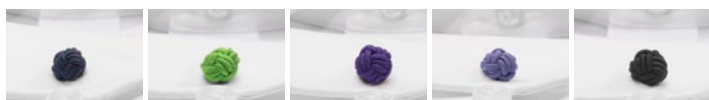
Complete the look with our fabulous ties and handkerchiefs. We use high tech microfibers in the ties because, well you know... You might spill that soup. Microfibers doesn't absorb. A quick rinse and voilà. Clean and as good as new.

100% microfiber One Size

99,-



100 WHITE 216 YELLOW 400 RED 500 SKY BLUE 532 BLUE



600 NAVY 727 GREEN 800 PURPLE 810 LIGHT PURPLE 900 BLACK

CUFFLINKS 2940000

All of our shirts come with an extra buttonhole in the cuff, so if you prefer you can wear a set of our classic double knot on bar cufflinks. Their hand-made from soft stretch band, and comes in a big variety of colors.

Soft stretchband 10 x 10 mm

25,-



600 NAVY



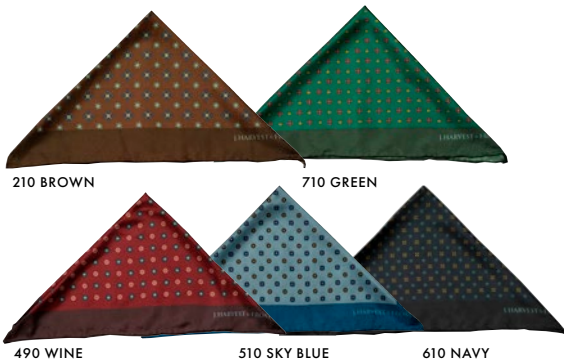
980 GREY

SOCKS 2970104

These cotton socks have elastic knitting at the ankle and arch for a perfect fit all day.

80% Organic Cotton, 15% polyamid, 5% lycra 40-42, 43-45

79,-



210 BROWN

710 GREEN

490 WINE

510 SKY BLUE

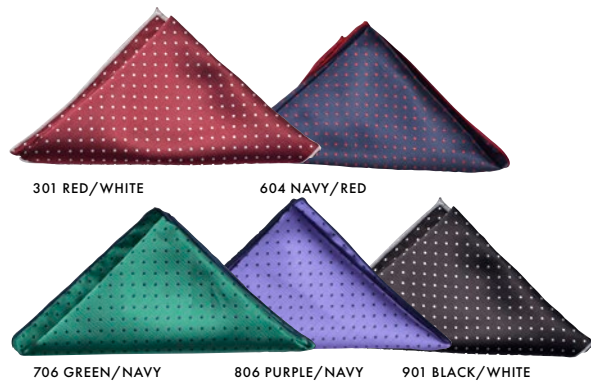
610 NAVY

HANDKERCHIEF SILK FLORAL 2920400

Classic silk handkerchief with floral patterns.

100% Silk One Size

119,-



301 RED/WHITE

604 NAVY/RED

706 GREEN/NAVY

806 PURPLE/NAVY

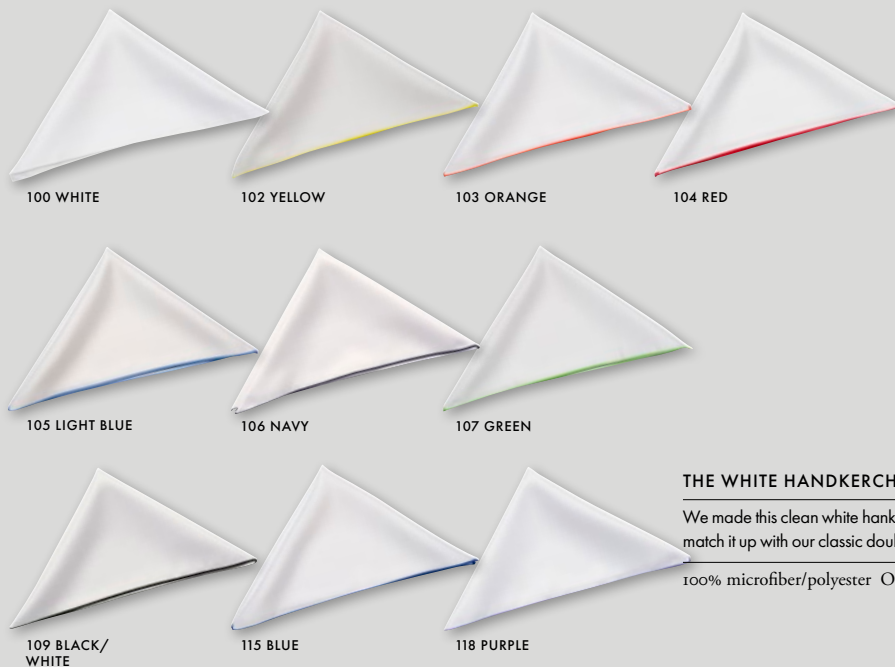
901 BLACK/WHITE

HANDKERCHIEF 2920000

Complete the look with our fabulous ties and handkerchiefs. We use high tech microfibers in these hankies. Easy to clean, hard to wrinkle and with a natural silk-looking sheen.

100% microfiber/polyester One Size

59,-



100 WHITE

102 YELLOW

103 ORANGE

104 RED

105 LIGHT BLUE

106 NAVY

107 GREEN

109 BLACK/WHITE

115 BLUE

118 PURPLE

THE WHITE HANDKERCHIEF 2920100

We made this clean white hanky's in a big variety of edge-colors. Feel free to match it up with our classic double knot cufflinks to suit your occasion with style.

100% microfiber/polyester One Size

59,-



388 ORANGE

488 PINK

588 BLUE

788 GREEN

888 PURPLE

988 GREY

THE PAISLEY HANDKERCHIEF 2920300

This handsome pocket squares features a bold paisley pattern with rich colors.

100% silk One Size

99,-



J. HARVEST & FROST
CORPORATE SHIRTMAKER

All prices are exclusive of value added tax (VAT) and shipping. Not responsible for misprints. Subject to final sale. Prices subject to change without notice.



